



LOHMANN SAILS & COVERS LTD.

www.BoatCovers.ca
Phone #: 250-722-3445
Toll Free: 1-877-537-9611
Email: admin@boatcovers.ca

In effect as of August 1, 2016

Custom Boat Covers – Instructions Manual

These Instructions form part of the terms of contract and use, and have to be followed to maintain the warranty. Lohmann Sails & Covers (LSC) is not liable for any damage that may occur if instructions are not followed.

The All Season/ Winter Cover can be used all year-round in nearly all conditions, except winds above 120 KM/H (80 Miles/H). During high wind conditions boat covers have to be monitored regularly since the LSC warranty and product liability is void due to extreme weather.

LSC boat covers are not maintenance free!

You or someone you assign has to check and re-tighten the cover regularly, especially after heavy wind, rain, or snow.

Tips, Tricks & Important Information:

- In order to increase the longevity of our covers by up to 30% we recommend that you don't use the cover during the months of May to the middle of September in order to protect the fabric from the high UV rays.
- We are delivering the basic cover with all supports needed to function, including adjustable metal posts where needed (please see pages 3 and 4). In areas where snowfall is expected the customer may have to provide additional support underneath the cover depending on the snow load in order to support the intended design and shape of the cover. Customers must also be available to service the cover by pushing the snow off in order to minimize the weight on the fabric.
 - Especially for Biminis additional support can be a simple wooden 2"x4" wedged under each Bimini frame (see page 4) or additional metal posts (see pages 3 and 4).
- If the cover was installed by us (which is the case 90% of the time), on your first takedown please take pictures and notes of the cover before taking it down to use as an example when you reinstall it in the fall. It is important to note the height of the cover installation on the mast and the height of the boom end. It is further recommended to do a trial installation of the cover in the summer so that you can ask for our assistance in case you have a



LOHMANN SAILS & COVERS LTD.

www.BoatCovers.ca
Phone #: 250-722-3445
Toll Free: 1-877-537-9611
Email: admin@boatcovers.ca

problem while we have the time to help you. We will not accept calls for assistance in the month of September until January since this is the time when we are busiest with the production of new covers. We also now offer a total service plan which includes installation, take down and storage of the cover (mostly for boats above 50 ft.). See the price calculator on our webpage for a cost estimation of what the service would cost for your boat or email us for a quote. Please note that we require a two-week time frame for all requested services.

Installation Tips:

- Always spread the cover first over the whole boat starting from the top (fly bridge), then the stern towards the bow. Sailboats and trawlers with masts are installed first over the boom and then attached to the mast. Then connect the other parts of the cover from the back to the front.
- Attach the tie downs after all dock lines and fenders are run through. After everything is attached tie the drawstring which runs in the fabric hem around the whole boat in the front. Next, crisscross the string at the back (Stern) and pull to tighten the cover properly around the hull or underneath the swim grit. You may need a significant amount of force for this. Tie off to secure.
- All non-locking zipper sliders have little strings attached which have to be secured either to one another or at the bottom of the cover with the connecting buckles
- It is very important to attach the cover at the proper height on the mast, if needed attach halyard to strap sewn to the mast wrapper and adjust as needed to prevent slipping down the mast (if there is a sail underneath I always go a little bit higher in case you buy a more voluminous sail in the future). The same applies to the end of the boom after laying out the cover, adjust the height with the topping lift so that the horizontal seam is laying exactly on the rail or lifeline. If you have determined the height of the cover on the mast and the boom, mark or measure it so you have a reference in the future.
- Wooden boats and boats with teak decks will sweat for some time, all the water stored in the wood fibers will condensate to the inside of the cover. Our cover fabric is breathable but if there is no force (temperature difference to the outside) it will stay on the fabric for a while. To speed up the drying process run your usual heater or fan inside while on board; do this at your own risk.



LOHMANN SAILS & COVERS LTD.

www.BoatCovers.ca
Phone #: 250-722-3445
Toll Free: 1-877-537-9611
Email: admin@boatcovers.ca

- If the cover is leaking at the seams don't panic after a while the little stitch holes will fill up with dirt and seal. Don't clean the seams too thoroughly in the spring.
- After the cover has been installed either by us or by yourself, remember to retighten the tension of the tie down straps after one week or after the next rainfall; you can extend the posts for the same effect. Contact us if you are unable to do this yourself or arrange someone you know to do it.
- After the first season please arrange for the free make over by using the service form on our webpage and write down all points of concern which need attention.
- Please leave the bags for the boat cover somewhere accessible on the boat at all times because you, I or someone else might have to take down the cover in an emergency and this is not possible without bags.

Adjustable Posts

All necessary posts are provided including a bag for transport.

These posts are made up of a 1" EMT conduit galvanized steel pipe fitting exactly into a 1 3/8" galvanized top rail with shepherd 1 1/8" or 1 1/2" rubber tips on both ends with metal washers for the piping. To adjust the height, use a hose clamp on the 1" post. All parts available at Home Depot or order them from us.

A condition of the use of all supplied posts is that we are not liable in any way for any damages resulting from the use of these posts. To hold the posts in position in stronger winds tie them at the bottom into three directions. Re-tighten straps and/or adjust posts as needed; the cover should be as tight as a drum.



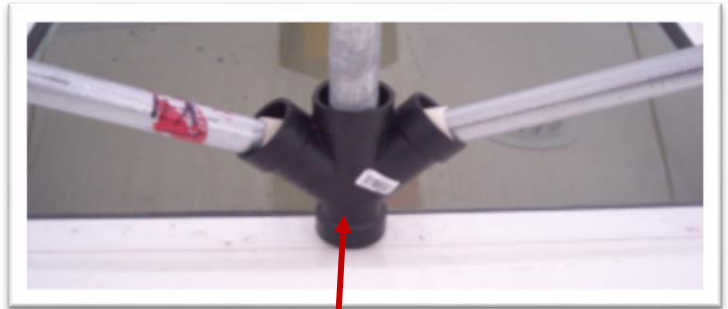


LOHMANN SAILS & COVERS LTD.

www.BoatCovers.ca
Phone #: 250-722-3445
Toll Free: 1-877-537-9611
Email: admin@boatcovers.ca

Additional Support for Larger Covers

To improve the stability and security of the side posts on bigger boats we are using these ABS 1 1/2" double Y's for the base of the posts.



Bimini Frame Support

Support each frame of the Bimini with a simple 2x4 SPF wood post with a little V-shaped groove. This is a must for all geographical areas where you can get snow on your cover.



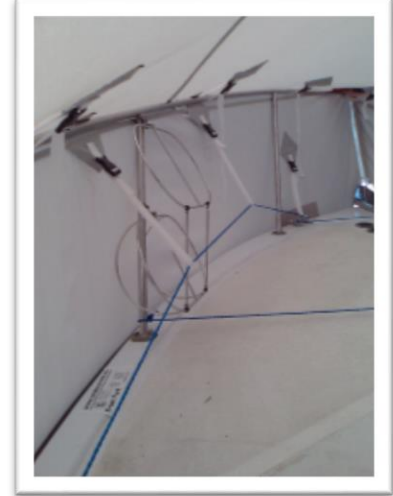
Or we can supply adjustable metal posts to support the Bimini for \$25/post.



LOHMANN SAILS & COVERS LTD.

www.BoatCovers.ca
Phone #: 250-722-3445
Toll Free: 1-877-537-9611
Email: admin@boatcovers.ca

Buckles



It is important to strap down the additional straps in the front section Rim (all parts of the cover downwards from the railing are called the Rim). This prevents water from puddling just above the railing. This applies especially to powerboat railings which have only a top rail, no middle and no foot rail. Please note all straps need to be on the outside of the lifeline, especially important on sailboats.